



**CURVE TABLE**






CURVE	RADIUS	DELTA	TANGENT	ARC	BEARING	CHORD
C226	162.00'	36°57'37"	54.14'	104.50'	S14°13'30"E	102.70'
C228	62.00'	27°51'00"	15.37'	30.14'	S71°35'52"W	29.84'
C229	77.00'	101°24'45"	94.10'	136.29'	N87°48'52"W	119.18'
C230	162.00'	25°41'59"	36.95'	72.66'	N24°15'30"W	72.06'
C231	162.00'	6°55'52"	9.81'	19.60'	N07°56'34"W	19.59'

**LINE TABLE**

LINE	LENGTH	BEARING
L7	38.34'	S04°28'38"E
L8	17.75'	S11°24'30"E
L9	3.36'	N57°17'42"E
L10	28.11'	N32°42'18"W
L11	0.72'	N04°28'38"W
L12	2.96'	S04°28'38"E

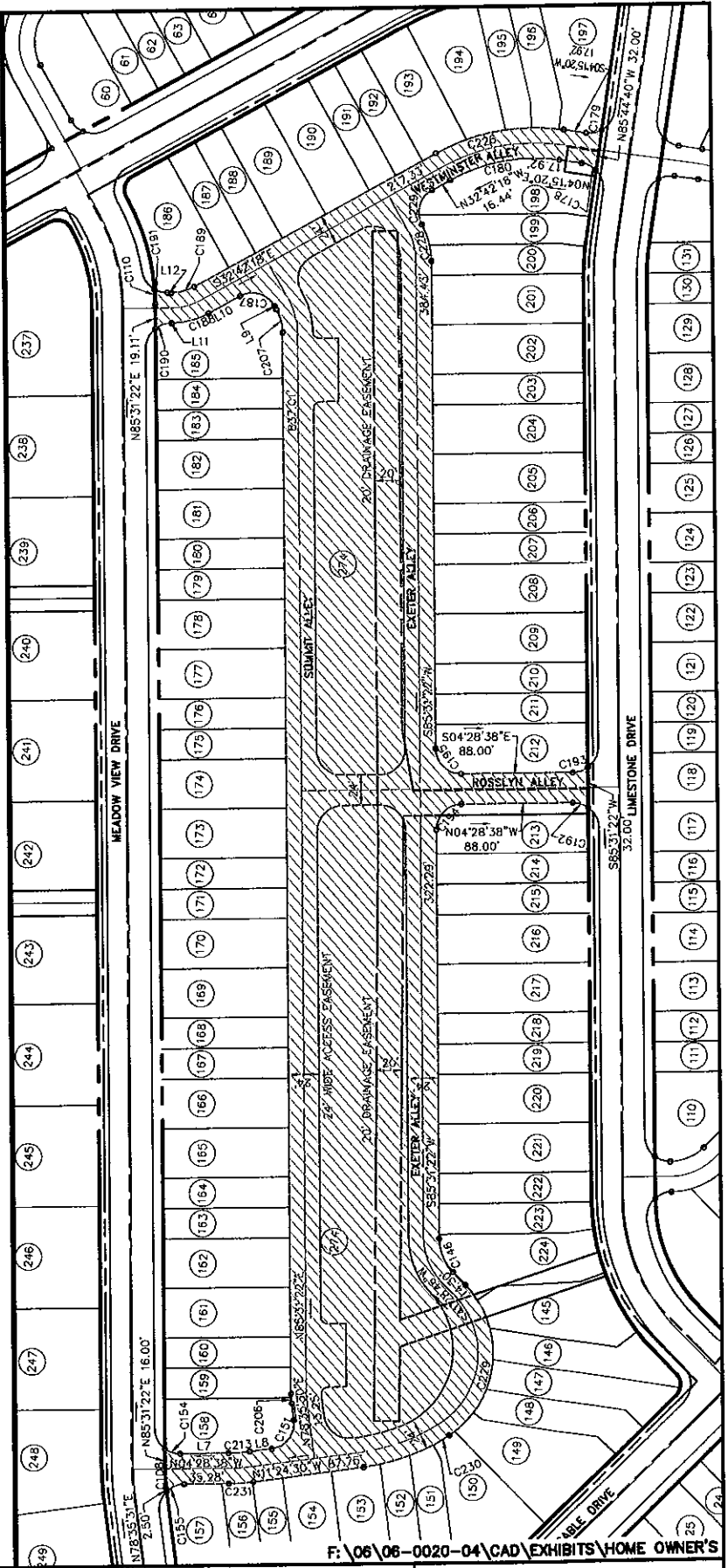
 HOMEOWNER'S ASSOCIATION LOT #274  
 = 3.070 ACRES

**LEGEND**

-  LOT LINE
-  R.O.W. LINE
-  PROPERTY LINE
-  EDGE OF PAVEMENT
-  PROPOSED EASEMENT

**CURVE TABLE**

CURVE	RADIUS	DELTA	TANGENT	ARC	BEARING	CHORD
C108	125.00'	6°55'51"	7.57'	15.12'	N82°03'26"E	15.11'
C110	175.00'	3°49'03"	5.83'	11.66'	N83°36'50"E	11.66'
C146	38.00'	44°02'36"	15.37'	29.21'	S63°30'04"W	28.50'
C151	20.00'	90°00'00"	20.00'	31.42'	S56°24'30"E	28.28'
C154	20.00'	36°52'12"	6.67'	12.87'	S13°57'28"W	12.65'
C155	20.00'	43°48'03"	8.04'	15.29'	N26°22'39"W	14.92'
C178	20.00'	36°52'12"	6.67'	12.87'	N22°41'25"E	12.65'
C179	20.00'	36°52'12"	6.67'	12.87'	S14°10'46"E	12.65'
C180	138.00'	36°57'38"	46.12'	89.02'	N14°13'29"W	87.49'
C187	20.00'	90°00'00"	20.00'	31.42'	N12°17'42"E	28.28'
C188	62.00'	28°13'40"	15.59'	30.55'	N18°35'28"W	30.24'
C189	38.00'	28°13'40"	9.55'	18.72'	S18°35'28"E	18.53'
C190	20.00'	36°52'12"	6.67'	12.87'	N22°54'44"W	12.65'
C191	20.00'	30°28'33"	5.45'	10.64'	S10°45'38"W	10.51'
C192	20.00'	36°52'12"	6.67'	12.87'	N13°57'28"E	12.65'
C193	20.00'	36°52'12"	6.67'	12.87'	S22°54'44"E	12.65'
C194	20.00'	90°00'00"	20.00'	31.42'	N49°28'38"W	28.28'
C195	20.00'	90°00'00"	20.00'	31.42'	S40°31'22"W	28.28'
C206	62.00'	6°55'52"	3.75'	7.50'	N82°03'26"E	7.50'
C207	38.00'	28°13'40"	9.55'	18.72'	N71°24'32"E	18.53'
C213	138.00'	6°55'52"	8.36'	16.69'	S07°56'34"E	16.68'



HOMEOWNER'S ASSOCIATION LOT #274  
 FOR  
**THE GABLES AT JACKSON**

JACKSON TOWNSHIP

LEBANON COUNTY, PA

**PIONEER**  
 Management, LLC

111 Millersville Road, Lancaster, PA 17603  
 Phone (717) 481-5500 · Fax (717) 481-4955  
 Email: info@pioneer.com

DRAWN BY: D.A.F.

DATE: 12/13/06

SCALE: NOT TO SCALE

DWG. NO. 06-0020-04-B

F:\06\06-0020-04\CAD\EXHIBITS\HOME OWNER'S