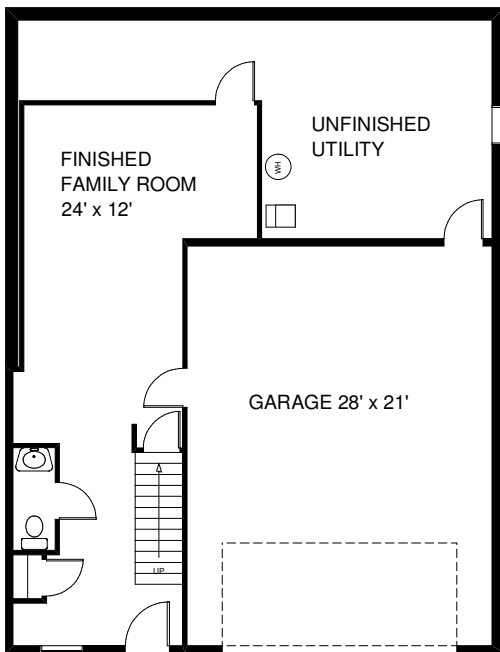




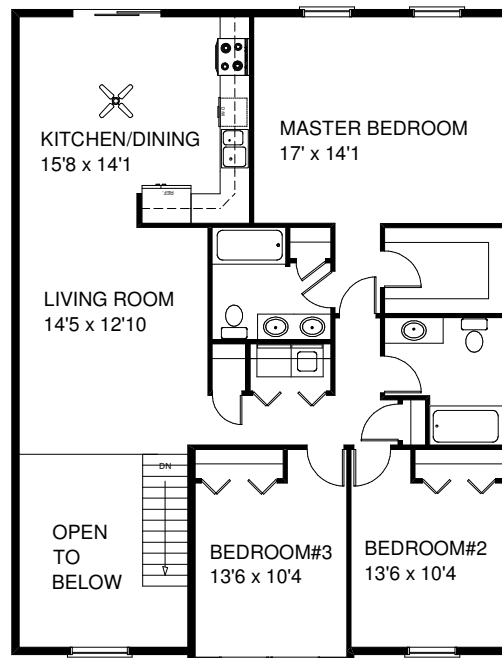
Options Shown: Cedar Impressions Siding, Garage Door Glass, Front Door Surround

First Floor



\$182,900 *
1,328+ Sq Ft

The
Fillmore A/S



Kreiser Construction
Creator of Distinct Communities

Second Floor

Century 21
Kral Real Estate
(800)-537-1575

* Price includes Base lot and \$2,000 Closing Cost Assistance. Drawings are conceptual. Actual home will vary. Options offered at additional charge. See your community sales manager for details. Updated 12/1/2007 (c) 2007 KREISER CONSTRUCTION