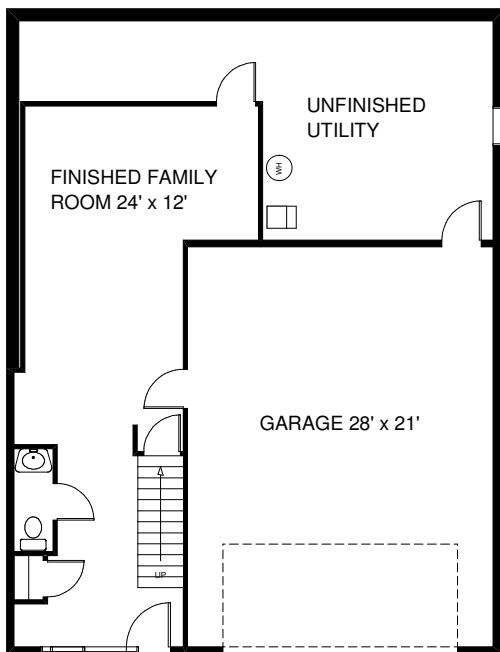




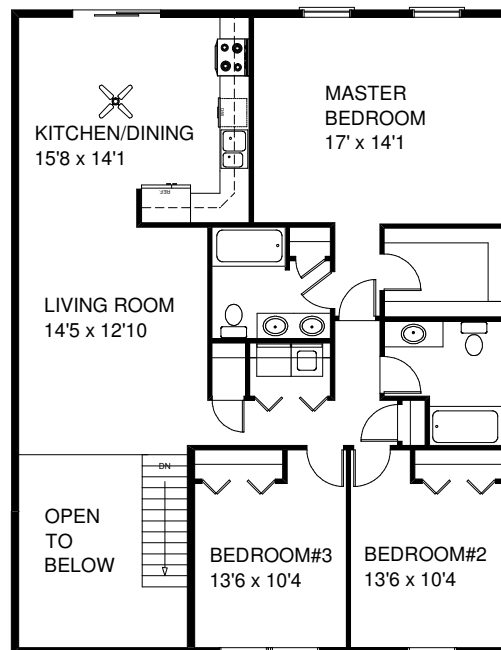
Options Shown: Brick, Garage Door Glass, Carriage House Garage Door, Front Door Glass

First Floor



\$182,900 \*  
1,328+ Sq Ft

The  
Fillmore B/S



**Kreiser Construction**  
Creator of Distinct Communities

Second Floor

**Century 21**  
Krall Real Estate  
(800)-537-1575

\* Price includes Base lot and \$2,000 Closing Cost Assistance. Drawings are conceptual. Actual home will vary. Options offered at additional charge. See your community sales manager for details. Updated 12/1/2007 (c) 2007 KREISER CONSTRUCTION