

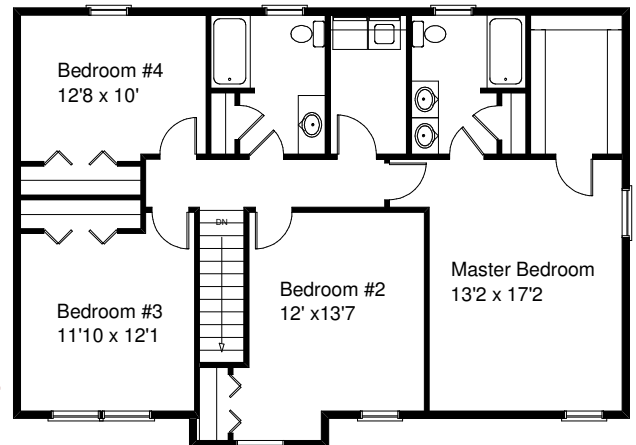
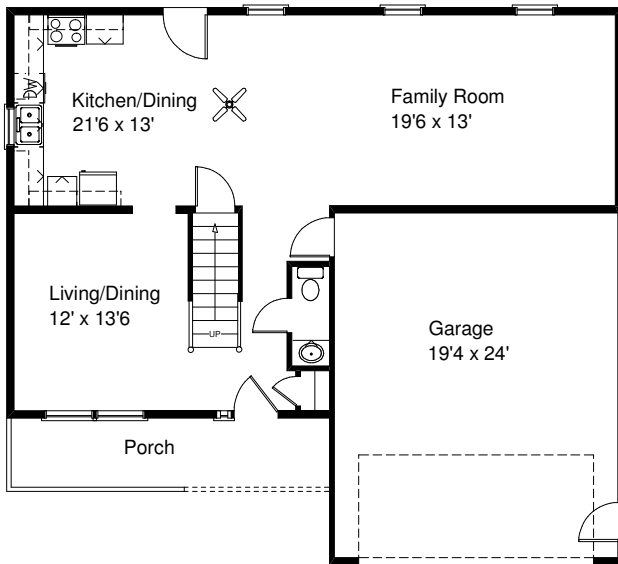


Options Shown: Brick, Stone, Cedar Impressions Siding, Garage Door Glass

First Floor

\$214,900 *
2,088 Sq Ft

The Jackson



Second Floor

Kreiser Construction
Creator of Distinct Communities

Century 21
Krall Real Estate
(800)-537-1575

* Price includes Base lot and \$2,000 Closing Cost Assistance. Drawings are conceptual. Actual home will vary. Options offered at additional charge. See your community sales manager for details. Updated 12/1/2007 (c) 2007 KREISER CONSTRUCTION