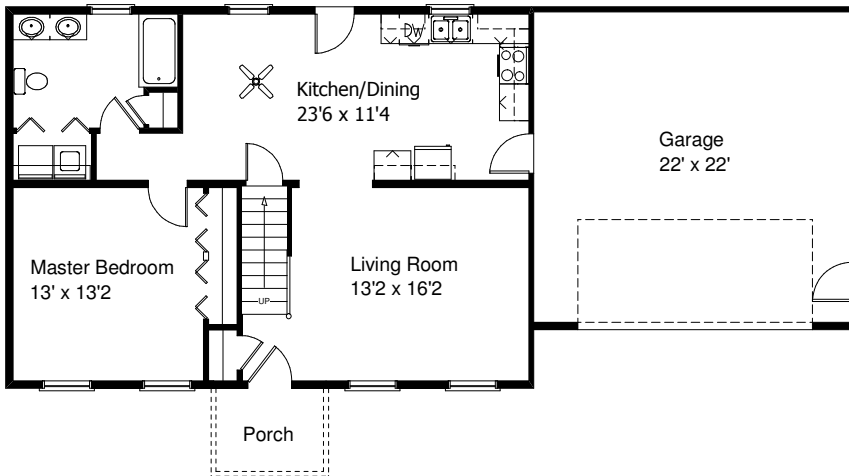




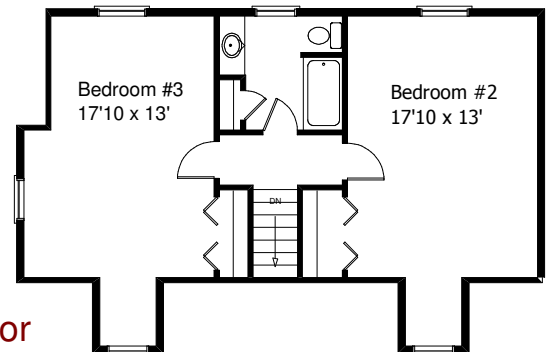
Options Shown: Stone, Vertical Siding, Cedar Impressions Siding, Carriage House Garage Door, Garage Door Glass

First Floor



\$206,900 *
1,612 Sq Ft

The Tyler



Second Floor

Kreiser Construction
Creator of Distinct Communities

Century 21
Kral Real Estate
(800)-537-1575

* Price includes Base lot and \$2,000 Closing Cost Assistance. Drawings are conceptual. Actual home will vary. Options offered at additional charge. See your community sales manager for details. Updated 12/1/2007 (c) 2007 KREISER CONSTRUCTION